

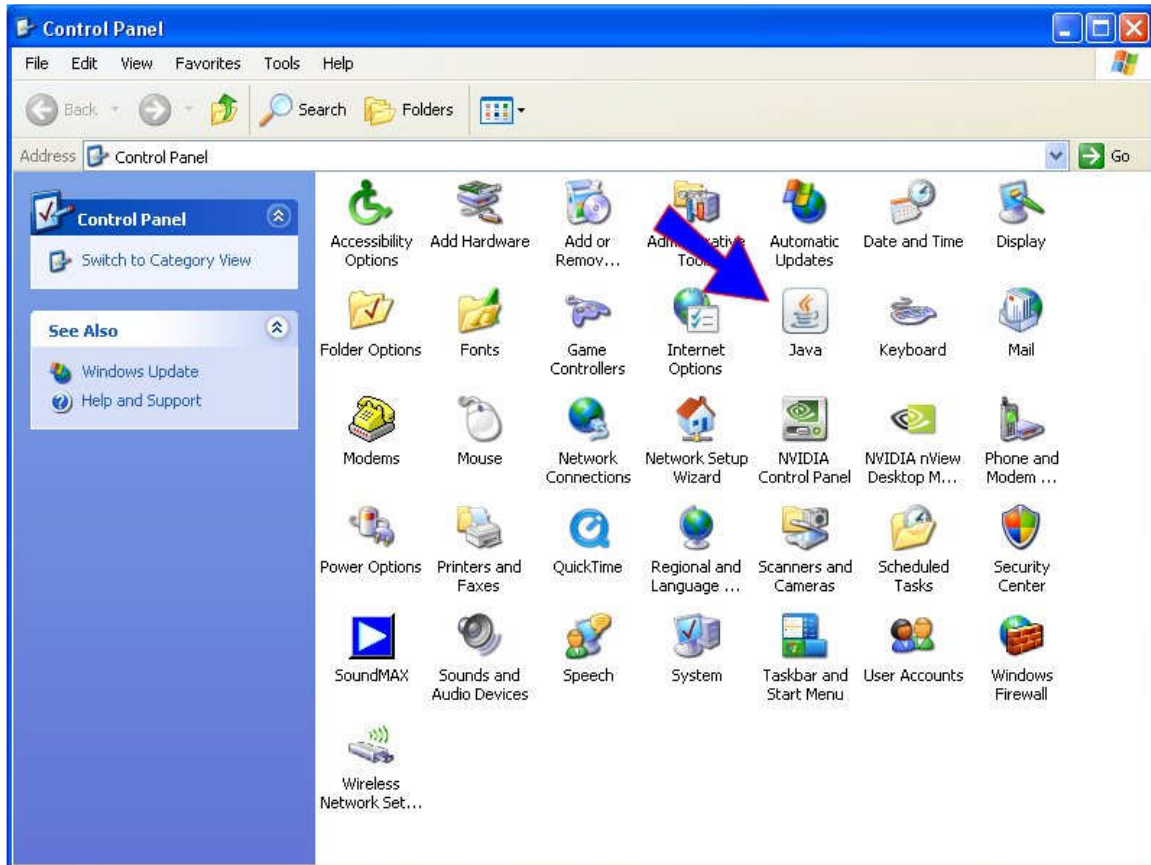
How to Increase Memory to Java for Increased Performance

Some of the BSEWebsite.com Java tours require extra memory that is not a standard setting on the newer versions of Java. To change these settings is very simple if you just follow the directions below.

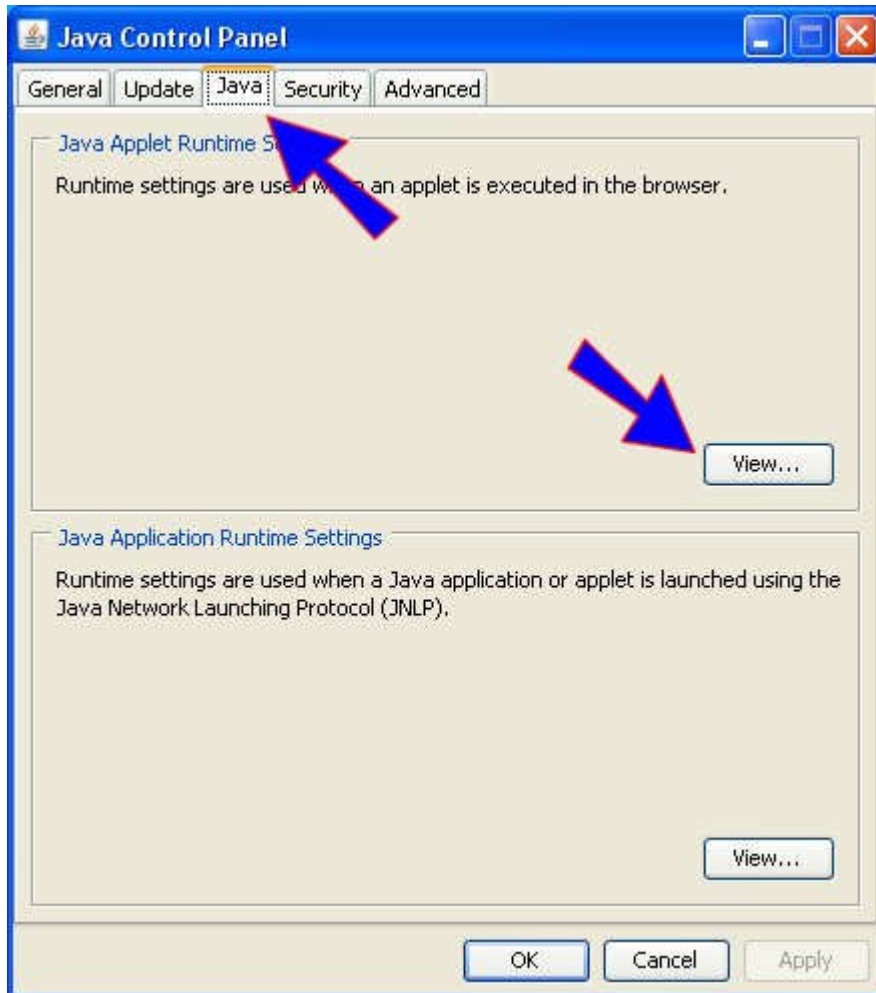
1. First click on your “Start” button on your Task Bar, and then click on “Control Panel”.



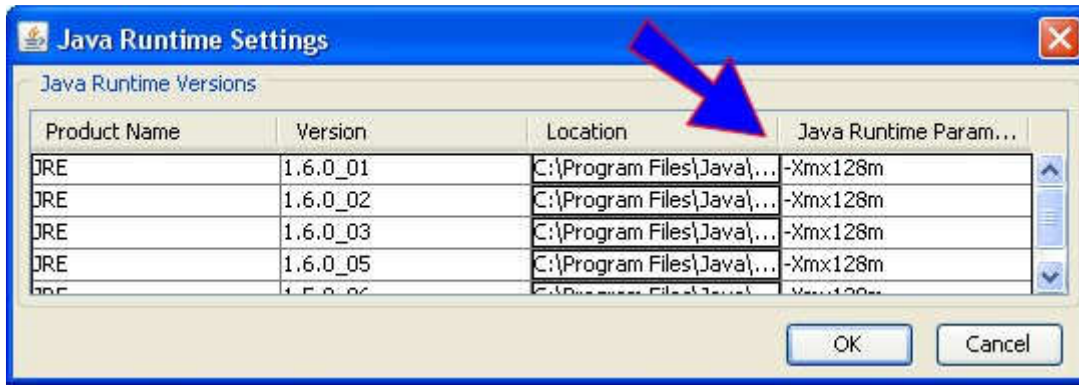
2. Inside the “Control Panel” please find the “Java” icon.



3. Inside the “Java” window click on the Java tab at the top of the screen, and then click on the “View” button.



4. Last add the change the “Java Runtime Parameters” to: -Xmx128m exactly as shown below.



5. Click “OK”, and then “Apply”. After clicking “Apply” you may open the “View” window one more time to double check your changes have been applied. Now exit all windows & your tours should run correctly. Contact BSEWebsites.com at 800.659.6410 with any questions about our tours or their operations.